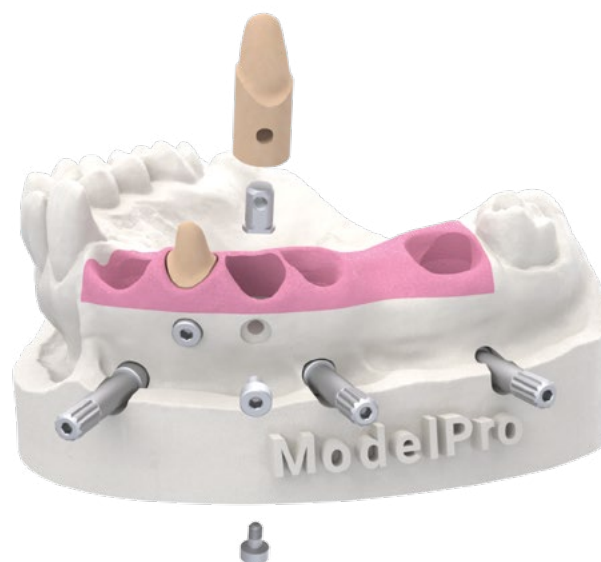


We understand that producing accurate, detachable dies in 3D printed models can be a challenge. We have developed a system which prevents any mobility and rotation of the detachable die. This solution ensures accurate positioning of the die in relation to the contact points of the adjacent teeth.

IPD's unique **ModelPro** solution gives you the tools to ensure predictability and consistency with the removable dies in your 3D printed models.



Technical Specifications

- **Double fixation at 90°** which ensures the correct position of the die in the model.
- Screws with **quick thread** for easy handling.
- Unidirectional **plane** for **positioning** according to the model design.
- Extended width at the base of the insert to check for **proper seating**.
- **Reduced size** to enable its use in all types of dies.

Printer calibration



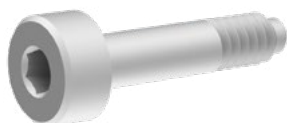
Screw attachment to the insert for easy manipulation of the test fixture



The Stump Die 3D master file will allow to check printer resolution enabling to choose the relevant OFF value into ModelPro aiding to achieve a proper fitting.



1



2



3

*ModelPro and Stump 3D subject to territorial availability. Consult us for disponibility.

Config.	Product	Units	Reference
1	Body	1	IPD/KA-ST-01
2	Side Screw (long)	1	IPD/KA-ST-02
3	Low Screw (short)	1	IPD/KA-ST-03
1 + 2 + 3	Kit body + 2 screws	1	IPD/KT-ST-00
1 + 2 + 3	Kit body + 2 screws	10	IPD/KT-ST-10